

## Mold flow for Design Optimization

### Objective:

Shifting weld line to non visible area.  
 Analysis Type: Fill +Pack +Warp

Weld lines are visible at aesthetic area.

- To avoid this, modified the feed system for flow control.

### Part Description:

Part Dimension: 314\*156\*170  
 Part volume: 167.9245 cm<sup>3</sup>  
 Material: PC+PBT

- As per mould design we found the weld line at visible aesthetic area shown n fig.2.
- To avoid weld line at visible area we have move at corners.
- Shifting of weld line could be possible by optimizing the feed system.
- Given runner & gate dimension was shown in fig1. & optimized runner & gate dimension is shown in fig.3.
- By doing these changes in design we achieved to move the weld line to non visible area as shown in fig. 4.

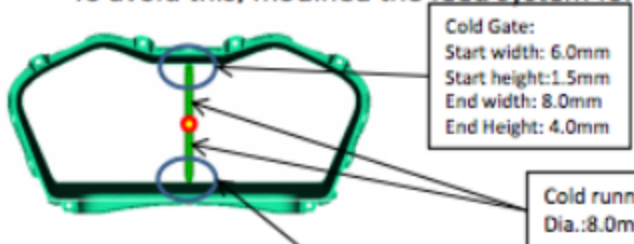


Fig. 1

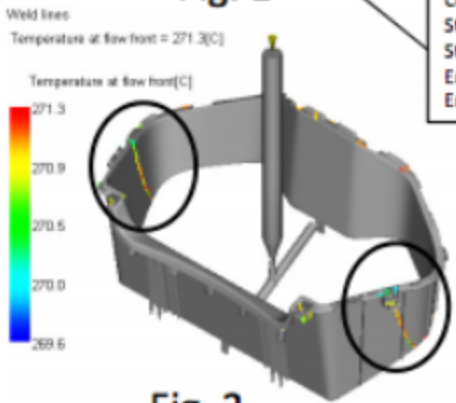
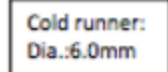
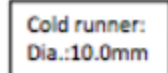


Fig. 2

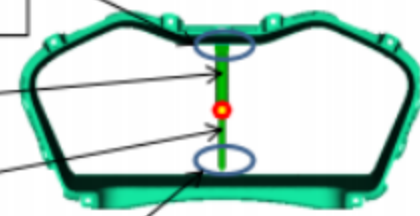


Fig. 3

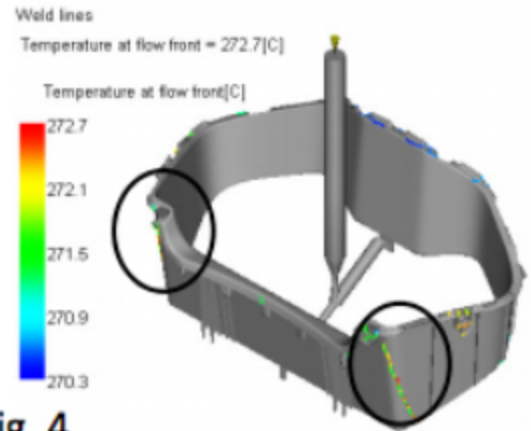


Fig. 4